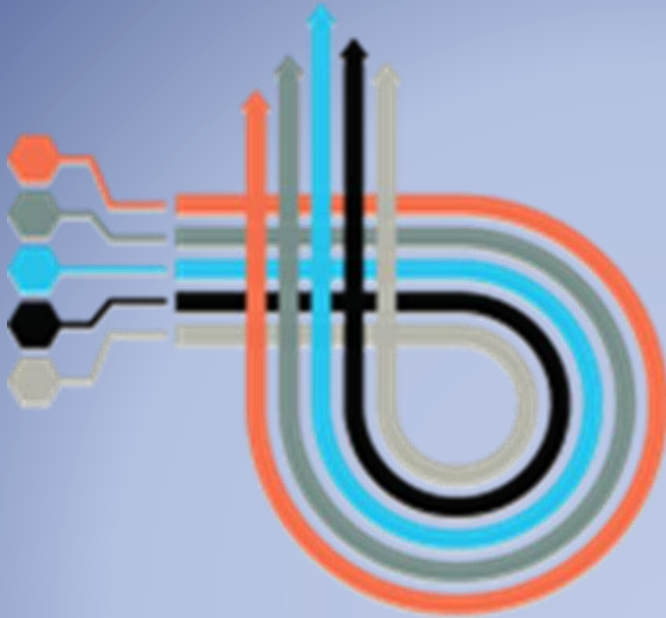




sustainable thriving achieving

East Dunbartonshire Council

www.eastdunbarton.gov.uk



**Local
Government
Benchmarking
Framework**

2022/23 Data Analysis






Corporate Performance and Research

September 2024

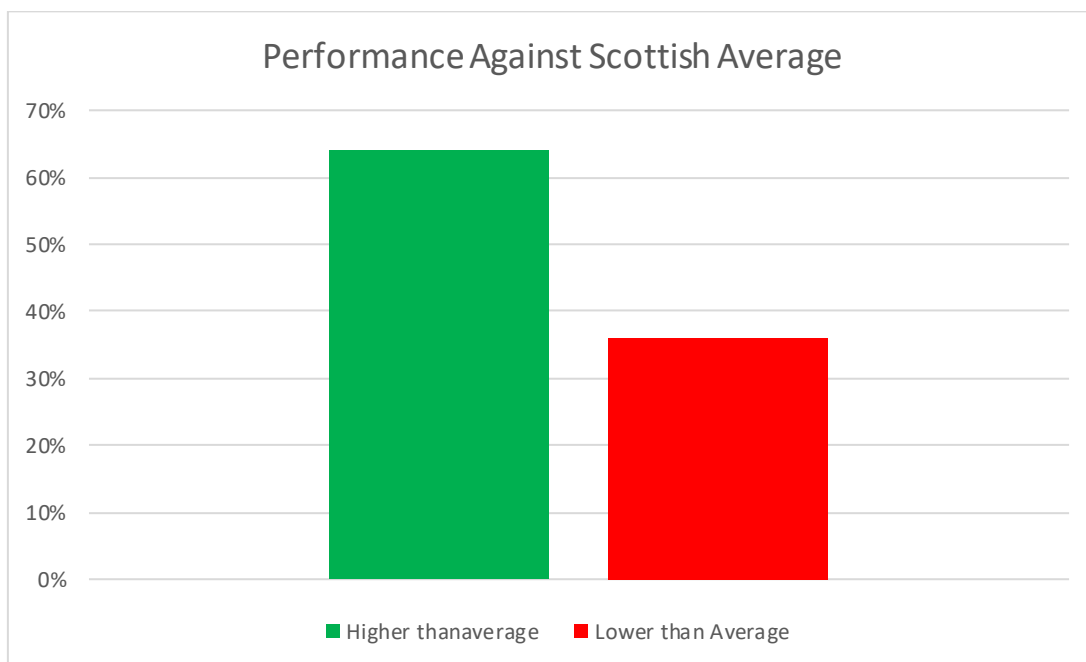
Contents

Performance and Rankings.....	3
Breakdown of Performance by LGBF Thematic Area.....	5
Performance by Quartile.....	6
Most Improvement/Decline (By rank)	7
Full breakdown of Indicators by Thematic Area	8
Children’s Services.....	8
Corporate Services	10
Adult Services	11
Environmental Services	12
Culture and Leisure.....	13
Housing	13
Economic Development	14
Financial Sustainability.....	15
Climate Change.....	15

Key for symbols used in indicator analysis

	Performance Higher than Scottish Average
	Performance below Scottish Average
	Performance Improved from previous year
	Performance Declined from previous year
	Performance remains unchanged from previous year

Performance and Rankings



Indicator Performance against Scottish Average	2022/23	2022/23
	Number	Proportion
<i>Performing higher than the Scottish Average</i>	68	64%
<i>Performing lower than the Scottish Average</i>	39	36%
<i>No Change/ NA</i>	0	0%

- The majority of Indicators in the dataset for 22/23 perform above the national average with only 36% being in the bottom half of Scottish Local Authorities.

Indicator Performance from Baseline Year	Baseline	
	Number	Proportion
<i>Improved Performance</i>	66	62%
<i>Declined Performance</i>	41	38%
<i>No Change/ NA</i>	0	0%

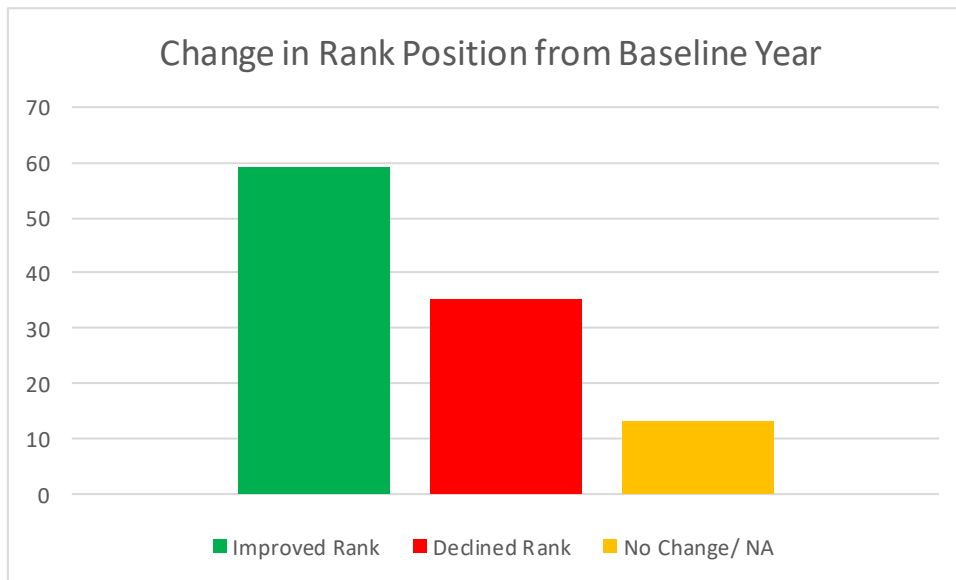
- The majority of indicators have improved in performance from their year of introduction to the dataset

<i>Indicator Performance from 2021/22</i>				
	2021/22	2021/22	2022/23	2022/23
	Number	Proportion	Number	Proportion
<i>Improved Performance</i>	57	55%	59	58%
<i>Declined Performance</i>	37	36%	40	39%
<i>No Change/ NA</i>	10	10%	3	3%

- The majority of Indicators have demonstrated improvement in performance from the previous year. This is against a national trend of declining performance

Indicator Performance against Family Group Average	2022/23	2022/23
	Number	Proportion
Performing Higher than Family Group Average	69	64%
Performing Under Family Group Average	36	34%
No Change/ NA	2	2%

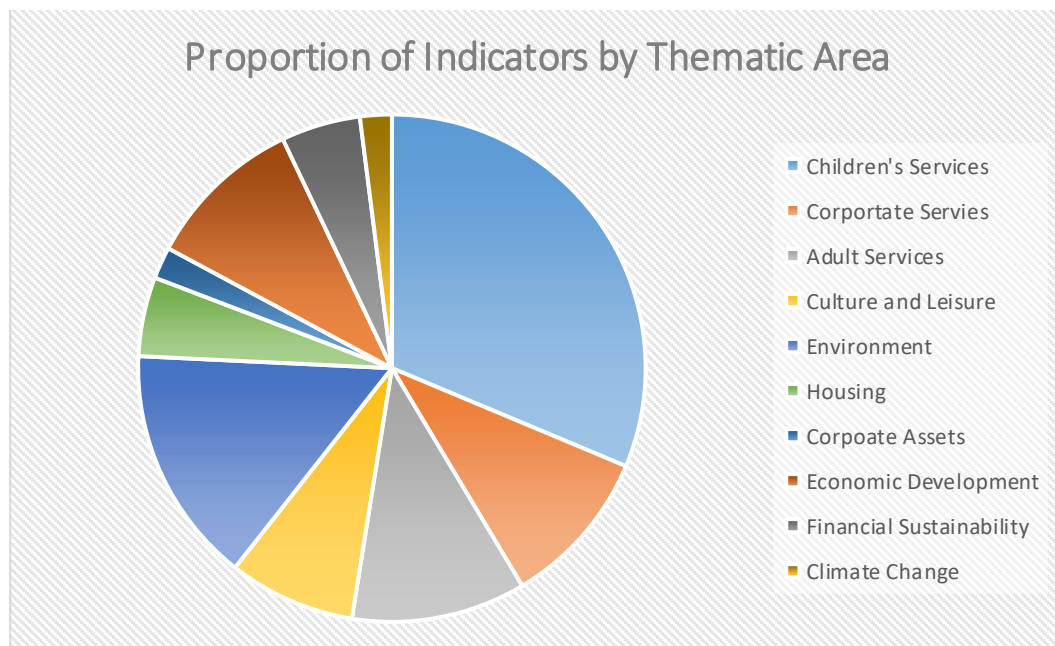
- When compared to our assigned family groups East Dunbartonshire's Performance is higher than average for the majority of indicators.



Rank Performance from Baseline Year	Baseline	Baseline Year
	Number	Proportion
Improved Rank	59	55%
Declined Rank	35	33%
No Change/ NA	13	12%

- Two thirds of LGBF indicators (67%) have Improved or sustained in rank position from their baseline position only 33% of indicators have declined in rank position, indicating that where performance is declining it is doing so at a lesser rate in East Dunbartonshire compared to the national average.

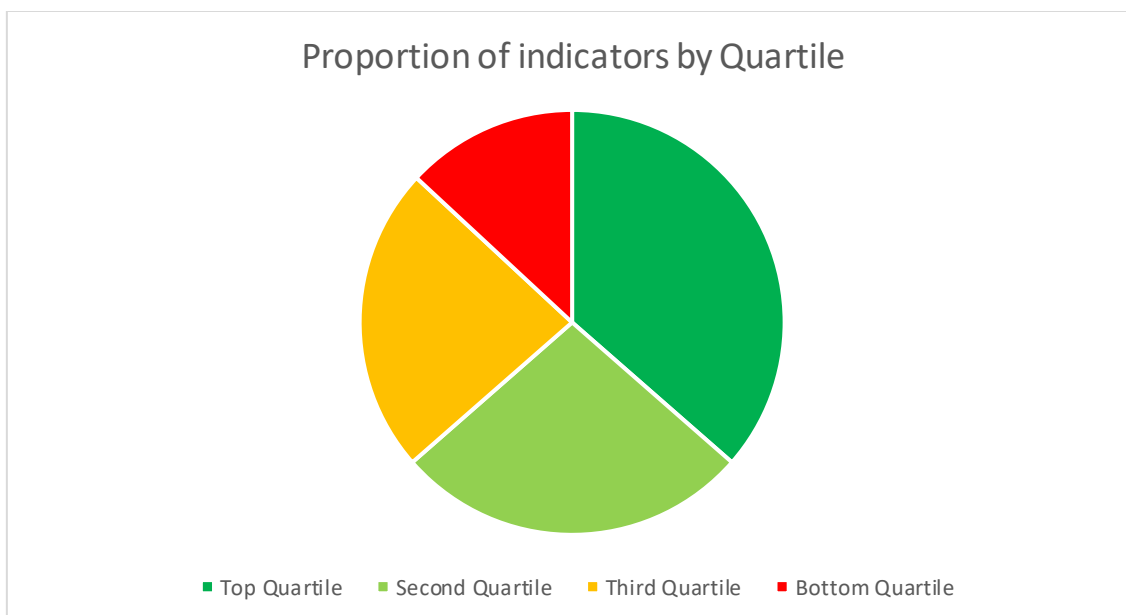
Breakdown of Performance by LGBF Thematic Area



	Performance from Baseline Year		
	Improved	Decline	No Change
Children's Services	59%	41%	0%
Corporate Services	64%	36%	0%
Adult Services	45%	55%	0%
Culture and Leisure	50%	50%	0%
Environment	80%	20%	0%
Housing	25%	75%	0%
Economic Development	62%	38%	0%
Financial Sustainability	100%	0%	0%
Climate Change	60%	40%	0%

	Performance from 2021/22		
	Improved	Decline	No Change
Children's Services	44%	50%	6%
Corporate Services	64%	50%	0%
Adult Services	29%	71%	0%
Culture and Leisure	50%	50%	0%
Environment	73%	27%	0%
Housing	100%	0%	0%
Economic Development	55%	36%	9%
Financial Sustainability	80%	20%	0%
Climate Change	80%	20%	0%

Performance by Quartile



- East Dunbartonshire is currently reporting over one third of indicators (36%) in the top quartile of Scottish Local Authorities and 63% of indicators in the top half of Scottish Authorities, only 12% of indicators are reported in the bottom quartile and these have been listed below.

Proportion of PI's in top and Bottom Quartiles				
Quartile	2021/22	2021/22	2022/23	2022/23
	Number	Proportion	Number	Proportion
Top Quartile	33	31%	39	36%
Second Quartile	28	27%	29	27%
Third Quartile	28	27%	25	23%
Bottom Quartile	16	15%	14	13%

Bottom Quartile Indicators
Cost per secondary school pupil
Literacy Attainment Gap (P1,4,7 Combined) - percentage point gap between the least deprived and most deprived pupils
Cost of roads per kilometre
Net cost per waste collection per premise
Net cost of waste disposal per premise
% of adults satisfied with leisure facilities
Average number of days taken to complete non-emergency repairs
% of unemployed people assisted into work from council operated / funded employability programmes
% of procurement spend spent on local enterprises
Investment in Economic Development & Tourism per 1,000 Population
Proportion of Children being looked after in the Community
Proportion of People Earning Less than the living wage
Cost of parks & open spaces per 1,000 population
GVA Per Capita

Most Improvement/ Decline (By rank)

- The indicators listed below are the ones in the dataset that have seen a significant shift in rank placing (5 places or more), indicating that there has been substantial Improvement/decline in performance from the previous year

PI's with significant improvement in rank (5+ places)

Sickness absence days per teacher
% of Crisis Grant Decisions within 1 day
% of total household waste arising that is recycled
Gross rent arrears (all tenants) as at 31 March each year as a percentage of rent due for the reporting year
% of rent due in the year that was lost due to voids
% of council dwellings meeting Scottish Housing Standards
Average time per business and industry planning application (weeks)
Town Vacancy Rates
Immediately available employment land as a % of total land allocated for employment purposes in the local development plan
Total useable reserves as a % of council annual budgeted revenue
Uncommitted General Fund Balance as a % of council annual budgeted net revenue
Ratio of Financing Costs to Net Revenue Stream - General Fund
Actual outturn as a percentage of budgeted expenditure

PI's with significant decline in rank (5+ places)

Literacy Attainment Gap (P1,4,7 Combined) - percentage point gap between the least deprived and most deprived pupils
% of funded early years provision which is graded good/better
Proportion of DHP Funding Spent
Residential costs per week per resident for people aged 65 or over
Street Cleanliness Score
% of adults satisfied with libraries
% of adults satisfied with leisure facilities
Proportion of internal floor area of operational buildings in satisfactory condition

Full breakdown of Indicators by Thematic Area

Children's Services	2022/23 Data	Status	Performance from 2021/22	2021/22 Data	Baseline Data	Scottish Average	Family Group Average	Ranking	Quartile
Cost per Primary School Pupil	£6,565	✓	↑	£6,649	£6,287	£6,841	£6,735	9	2
Cost per Secondary School Pupil	£9,087	⊘	↓	£9,082	£10,137	£8,495	£8,405	25	4
Cost Per Pre School Place	£11,475	⊘	↓	£10,952	£4,079	£11,002	£11,125	18	3
% of Pupils Gaining 5+ Awards at Level 5	87%	✓	-	87%	77%	66%	73%	2	1
% of Pupils Gaining 5+ Awards at Level 6	67%	✓	↑	64%	49%	38%	45%	2	1
%of Pupils from 20% most deprived areas gaining 5+ awards at level 5	81%	✓	↑	75%	57	50%	52%	1	1
%of Pupils from 20% most deprived areas gaining 5+ awards at level 6	53%	✓	↑	45%	38%	22%	27%	1	1
Gross Costs of Children Looked After in Residential based services per child per week	£4,470	✓	↑	£4,942	£,2876	£4,804	£5,183	16	2
Gross Costs of Children Looked After in a community setting per child per week	£485	⊘	↓	£469	£309	£422	£512	23	3
Proportion of Children being looked after in the Community	81.0%	⊘	↓	82.8%	82.8%	89.2%	83.4%	27	4
Proportion of Adults Satisfied with Local Schools	83.0%	✓	↑	79.7%	89.6%	73.7%	79.1%	5	1
Proportion of Pupils Entering Positive Destinations	98.6%	✓	↓	98.9%	94.9%	95.9%	95.9%	2	1
Overall Average Total Tariff Score	1318	✓	↓	1364	1091	915	1055	2	1
Average Total Tariff Score SIMD Q1	1057	✓	↑	1048	810	658	730	1	1
Average Total Tariff Score SIMD Q2	1013	✓	↓	1038	764	781	831	3	1
Average Total Tariff Score SIMD Q3	1158	✓	-	1158	956	905	978	2	1

Children's Services	2022/23 Data	Status	Performance from 2021/22	2021/22 Data	Baseline Data	Scottish Average	Family Group Average	Ranking	Quartile
Average Total Tariff Score SIMD Q4	1342	✓	↓	1432	1154	1051	1089	2	1
Average Total Tariff Score SIMD Q5	1490	✓	↓	1553	1255	1264	1229	2	1
% of P1, P4 and P7 Pupils achieving expected CFE level in literacy	82.80%	✓	↑	81.50%	84.30%	72.70%	75.60%	2	1
% of P1, P4 and P7 Pupils achieving expected CFE level in numeracy	87.30%	✓	↑	86.10%	89%	79.60%	81.90%	2	1
Literacy Attainment Gap	29.50	✗	↓	25.70	19.9	20.50	25.30	27	4
Numeracy Attainment Gap	21.1	✗	↓	20.8	14.8	17	20.5	24	3
Proportion of Children meeting developmental milestones	82.80%	✓	↑	80.20%	82.70%	82.10%	85.40%	14	2
Proportion of Early Years provision graded good or better	90.70%	✓	↓	95.10%	80.40%	90.10%	90.80%	19	3
School Attendance Rates	93%	✓	↓	94.30%	94.60%	90.20%	91.90%	1	1
School Attendance Rates (Looked after pupils)	86.90%	✓	↓	89.60%	88.50%	84.40%	86.10%	7	1
School Exclusion Rates	7.90%	✓	↓	6.80%	32.30%	16.60%	15.40%	4	1
School Exclusion Rates (Looked after Pupils)	65.70	✓	↑	148.70	442.50	96.90%	102.20%	14	2
Participation Rate for 16-19 year olds	97.5%	✓	↑	96.8%	95.6%	94%	95.80%	3	1
Proportion of Child protection re registrations within 18 months	6.7%	✗	↑	8.9%	16.1%	5.60%	3.60%	19	3
Proportion of LAC with more than 1 Placement in the last year	12.0%	✓	↑	13.4%	20.0%	17.20%	17.70%	7	1
Proportion of Children Living in Poverty (after Housing Costs)	15.7%	✓	↓	14.9%	15.2%	21.80%	18.20%	2	1

Corporate Services

	2022/23 Data	Status	Performance from 2021/22	2021/22 Data	Baseline Data	Scottish Average	Family Group Average	Ranking	Quartile
Support Services as a percentage of total gross expenditure	3.40%			3.80%	6.20%	4%	3.70%	11	2
Proportion of the highest paid 5% of employees who are women	61.20%			59.60%	44.40%	58.90%	57.10%	11	2
Gender Pay Gap	4.2%			3.80%	6.70%	2.50%	1%	22	3
Cost per Dwelling of Collecting Council Tax	£8.43			£9.53	£10.93	£6.84	£8.95	23	3
Sickness Absence Days per Teacher	5.1			5.4	4.8	6.8	6.3	3	1
Sickness Absence Days per employee non teacher	13.4			12	11.9	13.2	13.6	17	3
Percentage income from Council tax received by the end of the year	97.7%			97.50%	96.60%	96.2%	97.3%	4	1
Percentage of invoices sampled that were paid within 30 days	92%			93.40%	74.00%	90.5%	89.8%	14	2
Proportion of SWF Crisis Grant Decisions within 1 day	99.0%			97.8%	99.00%	91.8%	93.3%	6	1
Proportion of SWF Community Care Grant Decisions within 15 days	96.80%			96.30%	99.5%	87.30%	89.20%	12	2
Proportion of SWF Budget Spent	139.1%			122.70%	72.60%	130%	135.1%	13	2
Proportion of DHP Funding Spent	87.3%			92.10%	136.20%	94.4%	82.4%	18	3
% of operational buildings that are suitable for their current use	86%			84.4%	61.50%	86.1%	85.9%	18	3
% of internal floor area of operational buildings in satisfactory condition	88.60%			92.60%	97.50%	89.70%	89.50%	22	3

Adult Services

	2022/23 Data	Status	Performance from 2021/22	2021/22 Data	Baseline Data	Scottish Average	Family Group Average	Ranking	Quartile
Home Care Costs per hour for People 65+	£35.06			£34.31	£31.01	£30.45	£36.38	20	3
SDS as total % of SW Spend	5%			6%	2.8%	8.7%	9.2%	19	3
% of people 65+ with long term care needs who are receiving personal care at home	62.1%			62.7%	62%	61.5%	60.3%	14	2
% of adults supported at home who agree that their services and support had an impact in improving or maintaining their quality of life	N/A		N/A	77%	83.4%	78.1%	80.8%	20	3
% of adults supported at home who agree they are supported to live as independently as possible	N/A		N/A	87.9%	78.4%	78.8%	82.9%	3	1
% of adults supported at home who agree they had a say in how their care, help or support was provided	N/A		N/A	74.10%	75.90%	70.60%	71.30%	9	2
% of carers who feel supported in their caring role	N/A		N/A	30.20%	38%	29.70%	34%	16	2
Residential costs per week	£676.00			£521.00	£405.00	£684.00	£986	18	3
Rates of readmission to hospital within 28 days per 1000 discharges	78.6			82.1	79	102.2	90.7	5	1
Proportion of Adult care services rated good or better	87%			86.2%	83.3%	75%	77	1	1
Number of days people spend in hospital when they are ready to be discharged per 1000 population 75+	493			340	142	919	499	8	1

Environmental Services

	2022/23 Data	Status	Performance from 2021/22	2021/22 Data	Baseline Data	Scottish Average	Family Group Average	Ranking	Quartile
Net cost per waste collection per premise	£96.16			£94.75	£102.83	£75.57	£73.27	30	4
Net cost of waste disposal per premise	£120.29			£131.47	£132.74	£95.29	£87.22	26	4
Net cost of street cleaning per 1,000 population	£6318			£6,714	£15,568	£14255	£14618	2	1
Street Cleanliness Score	87%			90.1%	92.9%	92.1%	93.9%	17	4
Cost of roads per kilometre	£20,162			£14,685	£50,610	£12,940	£27,288	25	4
% of A class roads that should be considered for maintenance	27.20%			28.30%	37.40%	27.40%	23.60%	20	3
% of B class roads that should be considered for maintenance	24.0%			25.3%	31.7%	31.5%	24.0%	10	2
% of C class roads that should be considered for maintenance	28.7%			28.9%	30.1%	32.7%	24.3%	16	2
% of unclassified roads that should be considered for maintenance	33.7%			34.7%	48.3%	36.4%	32.8%	15	2
Cost of Trading Standards and environmental health per 1,000 population	£20395			£21834	£26108	£22682	£23140	13	2
Cost of Trading Standards, Money Advice & Citizen Advice per 1000 Population	£7660			£8015	£5665	£7340	£7893	20	3
Cost of environmental health per 1,000 population	£12737			£13819	£18785	£15340	£15247	12	2
% of total household waste arising that is recycled	51.8%			45.3%	40.4%	43.3%	40.7	8	1
% of adults satisfied with refuse collection	91%			89.3%	86.7%	78.0%	75.2	3	1
% of adults satisfied with street cleaning	65%			67.7%	80.1%	58.3%	65.1	10	2

Culture and Leisure	2022/23 Data	Status	Performance from 2021/22	2021/22 Data	Baseline Data	Scottish Average	Family Group Average	Ranking	Quartile
Cost per attendance at sports facilities	£2.98			£4.77	£3.46	£4.89	5.12	8	1
Cost per library visit	£2.63			£3.34	£8.39	£2.81	£3.96	13	2
Cost of museums per visit	£4.97			£7.09	£20.7	£3.07	4.76	18	3
Cost of parks & open spaces per 1,000 population	£30413			£30143	£29476	£23417	£26151	26	4
% of adults satisfied with libraries	77%			84.3%	84.7%	71.0%	74.1%	11	2
% of adults satisfied with parks and open spaces	87.7%			90.0%	82.3%	87.3%	87.0%	13	2
% of adults satisfied with museums and galleries	69.7%			67.3%	78.0%	71.3%	75.1%	16	2
% of Adults Satisfied with Leisure Facilities	74.0%			79.3%	80.6%	71.0%	71.5%	11	2

Housing	2022/23 Data	Status	Performance from 2021/22	2021/22 Data	Baseline Data	Scottish Average	Family Group Average	Ranking	Quartile
Gross rent arrears (all tenants) as at 31 March each year as a percentage of rent due for the reporting year	11.4%			12.8%	5.8%	9.6%	11.3%	19	3
% of rent due in the year that was lost due to voids	1.0%			1.4%	0.8%	1.7%	2.1%	8	2
% of council dwellings meeting Scottish Housing Standards	53.5%			13.9%	81.7%	70.9%	63.0%	19	3
Average number of days taken to complete non-emergency repairs	11.6			12	15.1	9.7	12.6	20	3

Economic Development

	2022/23 Data	Status	Performance from 2021/22	2021/22 Data	Baseline Data	Scottish Average	Family Group Average	Ranking	Quartile
% of unemployed people assisted into work from council operated / funded employability programmes	7.8%			8.0%	7.4%	12.9%	12.6%	29	4
Cost of planning & building standards per planning application	£4348			£3329	£4216	£5573	£6827	6	1
Average time per business and industry planning application (weeks)	7.4			11.1	65.9	12	10.6	4	1
% of procurement spend spent on local enterprises	12.2%			12.2%	24.9%	29.6%	28.9%	31	4
No of business gateway start-ups per 10,000 population	9.6			11.3	12.1	13.6	13.6	23	3
Investment in Economic Development & Tourism per 1,000 Population	£50358			£45390	£34378	£114160	£108761	30	4
Proportion of People Earning Less than the living wage	N/A		N/A	32.6%	20.6%	14.40%	19.20%	27	4
Proportion of properties receiving superfast broadband	98.1%			97.4%	75.0%	95.5%	98.6%	11	2
Town Vacancy Rates	5.0			7.2	7.6	12	8.45	3	1
Immediately available employment land as a % of total land allocated for employment purposes in the local development plan	4.0%			24.9%	86%	22.8%	31%	28	4
GVA Per Capita	£13324	N		£12461	£10894	£27039	£29240	31	4
Claimant Count as a % of Working Age Population	2.0%			2.9%	2.8%	3.2%	2.1%	4	1
Claimant Count as a % of 16-24 Population	2.2%			3.2%	4.8%	3.5%	2.4%	4	1

Financial Sustainability

	2022/23 Data	Status	Performance from 2021/22	2021/22 Data	Baseline Data	Scottish Average	Family Group Average	Ranking	Quartile
Total Useable Reserves as a % of council annual budgeted revenue	20.2%			15.7%	11.3%	24.5%	24.1%	23	3
Uncommitted General Fund Balance as a % of council annual budgeted net revenue	2.2%			1.9%	0.3%	3.2%	2.5%	18	3
Ratio of Financing Costs to Net Revenue Stream- General Fund	5.9%			7.4%	11.2%	5.4%	5.2%	15	2
Ratio of Financing Costs to Net Revenue Stream- HRA	21.3%			21.0%	30.0%	22.2%	22.5%	13	2
Actual outturn as a percentage of budgeted expenditure	104%			95.7%	99.4%	98.6%	99.8%	1	1

Climate Change

	2022/23 Data	Status	Performance from 2021/22	2021/22 Data	Baseline Data	Scottish Average	Family Group Average	Ranking	Quartile
C02 Emissions Area Wide per Capita	3.29			3.62	5.55	4.81	5.23	3	1
C02 Emissions area wide within the Scope of the LA per Capita	3.16			3.49	5.43	4.27	3.75	3	1
C02 Emissions from Transport Per Capita	20.91			18.53	3.35	27.67	18.54	13	2
C02 Emissions from Electricity per Capita	39.31			43.45	80.16	43.46	41.9	11	2
C02 Emissions from Natural Gas per Capita	54.69			57.08	54.5	57.23	63.05	17	3